

# CHASSIS PARTS BROCHURE



**YELLOWDECK**  
Cargo Equipment and Export Specialist

Tel: 305.731.2324

4402 NW 74 Ave | MIAMI, FL 33166

Hours: M-F 9am-4pm



**HUB CAP,OIL  
BOLT ON W/GASKET  
6 HOLE - 5.5" BC (343-4009)  
USTP PT# SW-HUB-00-0150**



**HUB CAP BOLTS  
GRD5, ZINC - (5/16"-18X3/4")  
USTP PT# SW-HUB-00-0170**



**HUB GASKET, UNIVERSAL  
5 HOLE  
USTP PT# SW-HUB-00-0205  
6 HOLE  
USTP PT# SW-HUB-00-0160**



**VENT PLUG RED .30/.40  
USTP PT# SW-HUB-00-0165**



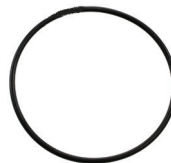
**HUB CAP,OIL,BOLT ON W/GASKET  
3 HOLE - 5.25" (340-4019/343-4019)  
USTP PT# SW-HUB-00-0200  
5 HOLE - 5.5" (340-4013/343-4013)  
USTP PT# SW-HUB-00-0195**



**GREASE HUBCAP,  
STANDARD TRAILER -  
6HOLE - 5.5" 2.5"D (340-5097)  
USTP PT# SW-HUB-00-0155**



**SCREW ON CAP O RING  
6"ID x 6 3/8"OD  
USTP PT# SW-HUB-00-0175**



**USED 96" 5 SPOKE AXLES**  
USTP PT# SW-AXL-00-0150



**NEW AXLES 71.5IN TRACK 22,500LB GAW**  
**23.38IN CAM 28SPL TAPERED SPINDLE 10-HOLE**  
USTP PT# SW-AXL-00-0155



**MUD FLAP ANGLE BRACKET**  
**11G 2"x 2"x 27.5"**  
USTP PT# SR-MFL-00-0340



**MUDFLAP BRACKET**  
**SPRING LOADED**  
USTP PT# SR-MFL-00-0345



**MOUNTING BRACKET FOR**  
**SPRING LOADED MUDFLAP BRACKET**  
USTP PT# SR-MFL-00-0360



**MUD FLAP RUBBER 24"x 24"**  
USTP PT# SR-MFL-00-0350



**MUD FLAP PLASTIC**  
**24"x 24"x 3/16"**  
USTP PT# SR-MFL-00-0355





**NEW TIRES**

**1000-20 HWY**

USTP PT# TY-TIR-00-0315

**11R22.5 HWY**

USTP PT# TY-TIR-00-0320

**11R22.5 TRACTION**

USTP PT# TY-TIR-00-0325



**NEW 1000-20 TUBE**

USTP PT# TY-TIR-00-0330



**TIRE CARRIER**

USTP PT# TY-TIR-00-0035



**SPOKE WHEEL STUD 3/4"-10"x 3" (M39 E4956A)**

USTP PT# SW-WHR-00-0265



**SPOKE WHEEL NUT 3/4"-10"x 1.25" HEX (E4963)**

USTP PT# SW-WHR-00-0270



**DRUM BOLT KIT 3/4-16x2 G8 W/ NUT & WASHER (KIT 5491-E5972) 5 PCS.**

USTP PT# SW-WHR-00-0275



**RIM CLAMP FOR 3/4" STUD 1.25"x 4" (E5784A)**

USTP PT# SW-WHR-00-0260



**NEW DAYTON 22.5X8.25  
TUBELESS DEMOUNTABLE RIM,  
WHITE**

USTP PT# SW-WHR-00-0285

**NEW 22.5X8.25  
DEMOUNTABLE RIM IMPORT**

USTP PT# SW-WHR-00-0290



**USED 1000-20 DAYTON RIMS**

USTP PT# SW-WHR-00-0280



**SPACER BAND 15"x 4" GRAY  
STEEL (SB4015)**

USTP PT# SW-WHR-00-0295



**20"x 5" SPOKE WHEEL W/SPACER & CLAMP  
HM218210/HM212011 NO ABS  
(75209-A)**

USTP PT# SW-HUB-00-0180



**NATIONAL WHEEL SEAL**

**#370025**

USTP PT# SW-WHS-00-0165

**#370036**

USTP PT# SW-WHS-00-0170

**#370065**

USTP PT# SW-WHS-00-0175



**TIMKEN  
WHEEL BEARING CUP**

**#218210**

USTP PT# SW-WHB-00-0235

**#212011**

USTP PT# SW-WHB-00-0240



**TIMKEN CONE BEARING**

**#593**

USTP PT# SW-WHB-00-0215

**#663**

USTP PT# SW-WHB-00-0220



**TIMKEN  
WHEEL BEARINGS SET 413  
HM212049/HM212011**

USTP PT# SW-WHB-00-0245



**TIMKEN WHEEL BEARING**

**#212049**

USTP PT# SW-WHB-00-0225

**#218248**

USTP PT# SW-WHB-00-0230



**TIMKEN  
WHEEL BEARING SET 414  
HM218248/HM218210**

USTP PT# SW-WHB-00-0250



**UNIVERSAL GLADHAND**  
USTP PT# BS-AIR-00-0690



**BLUE GLAD HAND**  
USTP PT# BS-AIR-00-0700



**RED GLAD HAND**  
USTP PT# SBS-AIR-00-0695



**GLADHAND SEAL**  
WIDE LIP, FULL FACE - 100PC BAG  
USTP PT# BS-AIR-00-0705



**281865X RE6**  
VALVE REPAIR KIT (282812)  
USTP PT# BS-VLV-00-0785

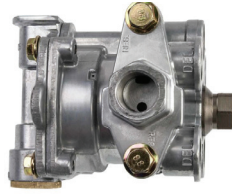


**FF2 REPAIR KIT KN28600K**  
USTP PT# BS-VLV-00-0780





**SPRING BRAKE CONTROL VALVE (110170)  
TRAILER PARKING & EMERGENCY**  
USTP PT# BS-VLV-00-0765



**R-12 TRAILER RELAY VALVE 3/8"  
4 DELIVERY PORTS (65303)**  
USTP PT# BS-VLV-00-0770



**FF2 FULL FUNCTION VALVE  
3/4 RESERVOIR 3 PSI (KN28600)**  
USTP PT# BS-VLV-00-0775



**RE-6 RELAY EMERGENCY VALVE  
3/8" OUTRIGHT (281865)**  
USTP PT# BS-VLV-00-0755



**RT-4 MULTI FUNCTION VALVE  
(KN26000)**

USTP PT# BS-VLV-00-0760



**RG3 RELAY VALVE  
(KN28510)**

USTP PT# BS-VLV-00-0850



**SPRING BRAKE PRIORITY VALVE  
(110500)**

USTP PT# BS-VLV-00-0855



**SPRING BRAKE CONTROL VALVE  
(110171)**

USTP PT# BS-VLV-00-0860



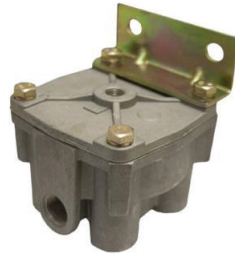
**TW-1 LEVER VALVE, PP1  
(229635)**

USTP PT# BS-VLV-00-0870



**R12 VALVE WITH 1/2"  
VERTICAL DELIVERY PORTS (102626)**

USTP PT# BS-VLV-00-0845



**SERVICE RELAY VALVE  
(110415)**

USTP PT# BS-VLV-00-0865



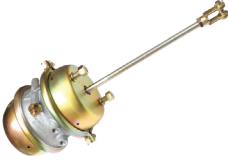
**1000R EMERGENCY RELAY VALVE  
(110171)**

USTP PT# BS-VLV-00-0790



**BRAKE CHAMBER  
30/30 DOUBLE ACTION**

USTP PT# BS-AIR-00-0710



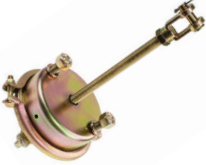
**T30 SINGLE ACTION**

USTP PT# BS-AIR-00-0710



**T20 SINGLE ACTION  
EMERGENCY CHAMBER**

USTP PT# BS-AIR-00-0720



**TYPE 30  
CHAMBER DIAPHRAGM**

USTP PT# BS-AIR-00-0730



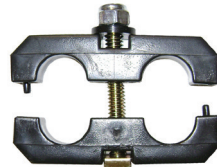
**UNIVERSAL BRAKE CHAMBER MOUNTING BRACKET  
FOR 5" ROUND AXLE (NL1120)**

USTP PT# BS-AIR-00-0725



**2 HOLE - 3/8" HOSE CLAMP**

USTP PT# BS-AIR-00-0735



**HOSE SEPARATOR 3/8"  
M473 / 100469 11548**

USTP PT# BS-AIR-00-0740





**RUBBER EPDM AIR HOSE  
3/8" X 500' - BLACK**

USTP PT# BS-ALF-00-0990

**RUBBER EPDM AIR HOSE  
3/8" X 50' - BLACK**

USTP PT# BS-ALF-00-0995

**RUBBER EPDM AIR HOSE  
1/2" X 50' - BLACK**

USTP PT# BS-ALF-00-1005



**NYLON HOSE REINFORCED TUBING  
I.D. 3/8" X 500'**

USTP PT# BS-ALF-00-1010

**NYLON HOSE REINFORCED TUBING  
I.D. 3/8" X 50'**

USTP PT# BS-ALF-00-1011

**NYLON HOSE REINFORCED TUBING  
I.D. 1/2" X 500'**

USTP PT# BS-ALF-00-1015

**NYLON HOSE REINFORCED TUBING  
I.D. 1/2" X 50'**

USTP PT# BS-ALF-00-1016



**AIR HOSE ASSEMBLY 3/8" HOSE  
3/8" FITTING**

**36" LONG SWIVEL**

USTP PT# BS-ALF-00-1025

**72" LONG SWIVEL**

USTP PT# BS-ALF-00-1030

**68" LONG SWIVEL**

USTP PT# BS-ALF-00-1035



**VINYL COATED TUBING CLAMP - 3/8"**

USTP PT# BS-ALF-00-1017



**SUPPORT SPRING**  
**1.08" OD 15.42" LG**  
USTP PT# BS-AIR-00-0745



**MANUAL SLACK ADJUSTER:**

**28 SPLINE 5"-6"-7"**  
USTP PT# BS-SLK-00-0170

**10 SPLINE 5"-6"-7"**  
USTP PT# BS-SLK-00-0175



**HOSE END KIT AIR BRAKE**

**3/8" NPTF 2 END FITTINGS**  
USTP PT# BS-ALF-00-1040

**1/2" NPTF 2 END FITTINGS**  
USTP PT# BS-ALF-00-1045



**DOT COILED AIR SET**  
- 15' WORKING LENGTH  
- TWO 12" LEADS  
- 1/2" DBL SWIVEL ENDS  
USTP PT# BS-ALF-00-1055



## FITTINGS: QUICK CONNECT

### UNION – PUSH IN

**1/4" – PL62PMT-4 (620400)**

USTP PT# BS-ALF-00-1085

**3/8" – PL62PMT-6 (620600)**

USTP PT# BS-ALF-00-1090

**1/2" – PL62PMT-8 (620800)**

USTP PT# BS-ALF-00-1095



### UNION TEE – PUSH IN

**1/4" – PL164PMT-4 (640400)**

USTP PT# BS-ALF-00-1275

**3/8" – PL164PMT-6 (640600)**

USTP PT# BS-ALF-00-1265

**1/2" – PL164PMT-8 (640800)**

USTP PT# BS-ALF-00-1315



### MALE RUN TEE – PUSH IN

**1/4" – 1/4" PL271PMT-4-4 (710404)**

USTP PT# BS-ALF-00-1220

**3/8" – 1/4" PL271PMT-6-4 (71060404)**

USTP PT# BS-ALF-00-1225

**3/8" – 3/8" PL271PMT-6-6 (710606)**

USTP PT# BS-ALF-00-1230

**1/2" – 3/8" PL271PMT-8-6 (710806)**

USTP PT# BS-ALF-00-1235



### MALE BRANCH TEE – PUSH IN

**1/4" – 1/4" PL272PMT-4-4 (720404)**

USTP PT# BS-ALF-00-1100

**3/8" – 1/4" PL272PMT-6-4 (72060404)**

USTP PT# BS-ALF-00-1110

**3/8" – 3/8" PL272PMT-6-6 (720606)**

USTP PT# BS-ALF-00-1115

**1/2" – 3/8" PL272PMT-8-6 (720806)**

USTP PT# BS-ALF-00-1105



## (FITTINGS: QUICK CONNECT)

### MALE CONNECTOR – PUSH IN

**1/4" - 1/8" PL68PMT-4-2 (680402)**

USTP PT# BS-ALF-00-1135

**1/4" - 1/4" PL68PMT-4-4 (680404)**

USTP PT# BS-ALF-00-1120

**3/8" - 1/4" PL68PMT-6-4 (680604)**

USTP PT# BS-ALF-00-1140

**3/8" - 3/8" PL68PMT-6-6 (680606)**

USTP PT# BS-ALF-00-1125

**3/8" - 1/2" PL68PMT-6-8 (680608)**

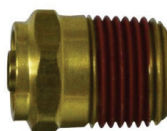
USTP PT# BS-ALF-00-1145

**1/2" - 3/8" PL68PMT-8-6 (680608)**

USTP PT# BS-ALF-00-1150

**1/2" - 1/2" PL68PMT-8-8 (680808)**

USTP PT# BS-ALF-00-1130



### MALE ELBOW - 45° - PUSH IN

**3/8" - 3/8" PL279PMT-6-6 (540606)**

USTP PT# BS-ALF-00-1155

**3/8" - 1/2" PL279PMT-6-8 (540608)**

USTP PT# BS-ALF-00-1165

**1/2" - 3/8" PL279PMT-8-6 (540806)**

USTP PT# BS-ALF-00-1160

**1/2" - 1/2" PL279PMT-8-8 (540808)**

USTP PT# BS-ALF-00-1170



### MALE ELBOW - 90°, Swivel – Push In

**1/4" - 1/8" PL169PMT-4-2 (690402S)**

USTP PT# BS-ALF-00-1190

**1/4" - 1/4" PL169PMT-4-4 (690404S)**

USTP PT# BS-ALF-00-1195

**3/8" - 1/4" PL169PMT-6-4 (690604S)**

USTP PT# BS-ALF-00-1200

**3/8" - 3/8" PL169PMT-6-6 (690606S)**

USTP PT# BS-ALF-00-1205

**1/2" - 3/8" PL169PMT-8-6 (690806S)**

USTP PT# BS-ALF-00-1210

**1/2" - 1/2" PL169PMT-8-8 (690808S)**

USTP PT# BS-ALF-00-1215





## FITTINGS: STANDARD CONNECT

### UNION

**1/4" - 62NTA-4 (38019)**

USTP PT# BS-ALF-00-1365

**3/8" - 62NTA-6 (38020)**

USTP PT# BS-ALF-00-1370

**1/2" - 62NTA-8 (38021)**

USTP PT# BS-ALF-00-1370



### UNION TEE

**1/4" - 264NTA-4 (38044)**

USTP PT# BS-ALF-00-1175

**3/8" - 264NTA-6 (38045)**

USTP PT# BS-ALF-00-1180

**1/2" - 264NTA-8 (38046)**

USTP PT# BS-ALF-00-1185



### MALE RUN TEE

**3/8" - 1/4" 271NTA-6-4 (38127)**

USTP PT# BS-ALF-00-1380

**3/8" - 3/8" 271NTA-6-6 (38128)**

USTP PT# BS-ALF-00-1385

**1/2" - 3/8" 271NTA-8-6 (38129)**

USTP PT# BS-ALF-00-1390



### MALE BRANCH TEE

**1/4" - 1/4" 272NTA-4-4 (38137)**

USTP PT# BS-ALF-00-1395

**3/8" - 1/4" 272NTA-6-4 (38139)**

USTP PT# BS-ALF-00-1400

**3/8" - 3/8" 272NTA-6-6 (38140)**

USTP PT# BS-ALF-00-1405

**1/2" - 3/8" 272PMT-8-6 (38141)**

USTP PT# BS-ALF-00-1410



(FITTINGS: STANDARD CONNECT)

**MALE ELBOW – 45°**

**3/8" – 3/8" 279NTA-6-6 (38152)**

USTP PT# BS-ALF-00-1450

**3/8" – 1/2" 279NTA-6-8 (NA)**

USTP PT# BS-ALF-00-1455

**1/2" – 3/8" 279NTA-8-6 (38154)**

USTP PT# BS-ALF-00-1460

**1/2" - 1/2" 279NTA-8-8 (38155)**

USTP PT# BS-ALF-00-1465



**MALE ELBOW 90° – FIXED**

**1/4" - 1/8" 269NTA-4-2 (38091)**

USTP PT# BS-ALF-00-1470

**1/4" - 1/4" 269NTA-4-4 (38092)**

USTP PT# BS-ALF-00-1475

**3/8" - 1/4" 269NTA-6-4 (38095)**

USTP PT# BS-ALF-00-1200

**3/8" – 3/8" 269NTA-6-6 (38101)**

USTP PT# BS-ALF-00-1480

**1/2" – 3/8" 269NTA-8-6 (38104)**

USTP PT# BS-ALF-00-1485

**1/2" – 1/2" 269NTA-8-8 (38105)**

USTP PT# BS-ALF-00-1490



**MALE CONNECTOR**

**1/4" - 1/8" 68NTA-4-2 (38073)**

USTP PT# BS-ALF-00-1415

**1/4" - 1/4" 68NTA-4-4 (38074)**

USTP PT# BS-ALF-00-1420

**3/8" - 1/4" 68NTA-6-4 (38077)**

USTP PT# BS-ALF-00-1425

**3/8" – 3/8" 68NTA-6-6 (38078)**

USTP PT# BS-ALF-00-1430

**3/8" – 1/2" 68NTA-6-8 (38079)**

USTP PT# BS-ALF-00-1435

**1/2" – 3/8" 68NTA-8-6 (38081)**

USTP PT# BS-ALF-00-1440

**1/2" - 1/2" 68NTA-8-8 (38082)**

USTP PT# BS-ALF-00-1445



## FITTINGS: MISCELLANEOUS

### INSERT TUBE

**1/4" 63NTA-4**

USTP PT# BS-ALF-00-1320

**3/8" 63NTA-6**

USTP PT# BS-ALF-00-1280

**1/2" 63NTA-8**

USTP PT# BS-ALF-00-1285



### REDUCER COUPLING

**3/8" TO 1/4" FEMALE PIPE**

USTP PT# BS-ALF-00-1065



### COUPLING

**1/4" FEMALE PIPE THREAD**

USTP PT# BS-ALF-00-1060



### FRAME COUPLING

**3/8" OD TUBE X 3/8" NPTF**

USTP PT# BS-ALF-00-1075



### BULKHEAD COUPLER

**1/2" x 1/4" x 2-1/8"**

USTP PT# BS-ALF-00-1070



(FITTINGS: MISCELLANEOUS)

**C-HEX NUT - BRASS**

**1/4" - 38-010**

USTP PT# BS-ALF-00-1325

**3/8" - 38-011**

USTP PT# BS-ALF-00-1290

**1/2" - 38-012**

USTP PT# BS-ALF-00-1295



**SLEEVE, TUBE REPLACEMENT**

**1/4" 1460 x 04**

USTP PT# BS-ALF-00-1270

**3/8" 1460 x 06**

USTP PT# BS-ALF-00-1255

**1/2" 1460 x 08**

USTP PT# BS-ALF-00-1260



**PIPE TO PIPE BUSHING**

**1/2" M TO 3/8" FM PIPE**

USTP PT# BS-ALF-00-1250



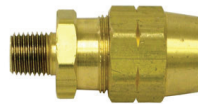
**HOSE TO HOSE CONNECTOR**

**3/8" ID HOSE X 3/8" - 18 THD**

USTP PT# BS-ALF-00-1240

**3/8" ID HOSE X 1/2" - 14 THD**

USTP PT# BS-ALF-00-1245





**CAMSHAFT - 24 1/16" - HEAD: 1 3/8" - DIA: 1 1/2" - 28 SPLINE**

**RH (E2446A)**

USTP PT# BS-CAM-00-0305

**LH (E-2445A/M992L)**

USTP PT# BS-CAM-00-0310

**CAMSHAFT - 17 1/4" - HEAD: 1 3/8" - DIA: 1 1/2" - 28 SPLINE**

**RH (E2442A)**

USTP PT# BS-CAM-00-0320

**LH (E2441A)**

USTP PT# BS-CAM-00-0315

**CAMSHAFT - 17 5/16" - HEAD: 1 3/16" - DIA: 1 1/2" - 28 SPLINE**

**RH (E5507)**

USTP PT# BS-CAM-00-0325

**LH (E5506)**

USTP PT# BS-CAM-00-0330

**CAMSHAFT - 11 1/16" - HEAD: 1 1/8" - DIA: 1 1/2" - 28 SPLINE**

**RH (E11434)**

USTP PT# BS-CAM-00-0335

**LH (E11433)**

USTP PT# BS-CAM-00-0340

**RH (E11867)**

USTP PT# BS-CAM-00-0345

**LH (E11866)**

USTP PT# BS-CAM-00-0350

**CAMSHAFT - 23.56" - HEAD: 1.10" - DIA: 1 1/2" - 10 SPLINE**

**RH (R607178)**

USTP PT# BS-CAM-00-0355

**LH (R607177)**

USTP PT# BS-CAM-00-0360

**CAMSHAFT - 22 7/8" - HEAD: 1.375" - DIA: 1 1/2" - 10 SPLINE**

**RH (E4885)**

USTP PT# BS-CAM-00-0365

**LH (E4884)**

USTP PT# BS-CAM-00-0370

**CAMSHAFT - 17 3/8 x 1 1/2 x 28 - DOUBLE GROOVE**

**RH (E2442B)**

USTP PT# BS-CAM-00-0375

**LH (E2441A)**

USTP PT# BS-CAM-00-0380

**CAMSHAFT - 24 1/16 x 1 1/2 x 28**

**RH (2210,E6869)**

USTP PT# BS-CAM-00-0385

**LH (2210,E6869)**

USTP PT# BS-CAM-00-0390



**CAM KIT FOR BOLT ON BUSHING  
MK90/E6078/NL4500/KIT8289**  
USTP PT# BS-CAM-00-0400



**CAM SHAFT BUSHING KIT  
MK88  
(KIT8078A/E9079HD)**  
USTP PT# BS-CAM-00-0405



**CAM KIT - 8078A, E9079HD  
R/W LATE TRLR  
W/FAB SPIDER**  
USTP PT# BS-CAM-00-0395



**CAM REPAIR KIT  
MK134  
(R615025/E11897)**  
USTP PT# BS-CAM-00-0415



**CAM SHAFT BUSHING KIT  
MK61  
(KIT8048/E3520)**  
USTP PT# BS-CAM-00-0410



**CAMSHAFT BUSHING REPAIR KIT  
MK16  
(E2382 KIT970)**  
USTP PT# BS-CAM-00-0420



**BRAKE DRUMS  
(WEBB 67518/3600A)**  
USTP PT# BS-BRD-00-0130



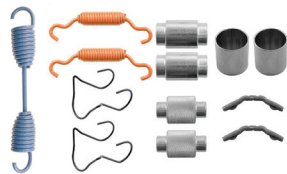
**4515Q 16 1/2X7 MARATHON MV23  
NO CORE – W/ SPRING KIT PR**  
USTP PT# BS-BRS-00-0255



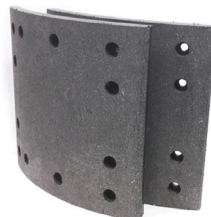
**BRAKE SHOE 4515Q 16 1/2X7  
NO CORE - W/ SPRING IMPORT PR**  
USTP PT# BS-BRS-00-0260



**MK-39 BRAKE SPRING KIT (Q STYLE)**  
USTP PT# BS-BRS-00-0265



**4515Q BRAKE SHOE MATERIAL  
M3/20,000LB. LINING KIT  
(DOES 4 SHOES)**  
USTP PT# BS-BRS-00-0270



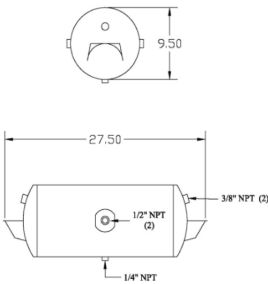
**10-9 RIVET - (FOR 4515Q BRAKE PADS)**  
**1/4" D X 9/16" L WITH 1/2" HEAD**  
**1000PCS**  
 USTP PT# BS-BRS-00-0275



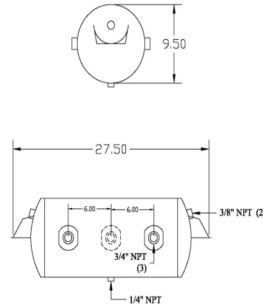
**HAND HELD RIVET SQUEEZER**  
 USTP PT# BS-BRS-00-0280



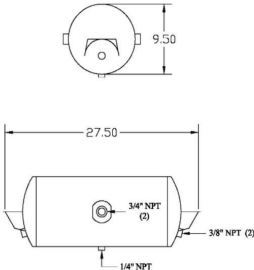
**AIR TANK 9.5DIA 27.5" C-C MTG**  
**1/2" MAIN 1/4" DRAIN 3/8" END**  
**2 MAIN PORTS**  
 USTP PT# BS-TNK-00-0095



**AIR TANK - STEEL**  
**9.5" X 27.5" X 2.75"**  
 USTP PT# BS-TNK-00-0100



**AIR TANK 9.5DIA 27.5" C-C MTG**  
**3/4" MAIN 1/4" DRAIN 3/8" END**  
**2 MAIN PORTS**  
 USTP PT# BS-TNK-00-0105



**AIR TANK MOUNTING PAD**  
**3/16" THICK RUBBER**  
**2.25" C-C**  
 USTP PT# BS-TNK-00-0110





THIS PAGE INTENTIONALLY LEFT BLANK.

**7 WAY  
RECEPTACLE/SOCKET**  
USTP PT# EL-RCP-00-0130



**7 WAY PLUG**  
USTP PT# EL-RCP-00-0135



**7 WAY/14 GAUGE  
ELECTRICAL TRAILER WIRE**

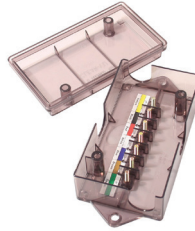
**50' ROLL 6/14-1/12GA**  
USTP PT# EL-WIR-00-0330

**100' ROLL 6/14-1/12GA**  
USTP PT# EL-WIR-00-0335

**500' ROLL 6/14-1/12GA**  
USTP PT# EL-WIR-00-0340



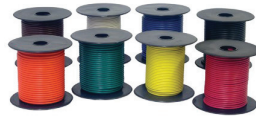
**JUNCTION BOX  
7-TERMINAL (22040)**  
USTP PT# EL-WIR-00-0345



**ELECTRICAL TAPE**  
**7MIL x 3/4IN x 10YDS**  
USTP PT# EL-WIR-00-0350



**WIRE PRIMARY 14GA  
BLACK 100' ROLL**  
USTP PT# EL-WIR-00-0355



**CRIMP RING  
TERMINAL**  
**16-14GA 3/8" - 25PCS**  
**(1-1626)**  
USTP PT# EL-WIR-00-0360



**16-14GA  
BUTT CONNECTOR**  
**STA-DRY CRIMP & HEAT**  
**100PCS (1-1962)**  
USTP PT# EL-WIR-00-0365



**CLEARANCE MARKER LIGHT - 2 BULB  
4" L x 2" W x 1-1/8" D, INCANDESCENT**

**AMBER**

USTP PT# EL-LMP-00-0335

**RED**

USTP PT# EL-LMP-00-0340



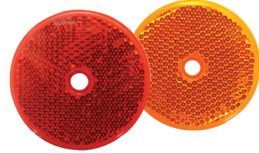
**2" ROUND REFLECTOR -  
SCREW ON**

**AMBER**

USTP PT# EL-LMP-00-0355

**RED**

USTP PT# EL-LMP-00-0360



**4" SEALED BACK UP LAMP - 12V.  
WHITE WITH GROMMET AND PIGTAIL**

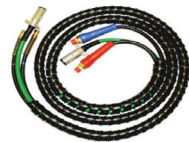
USTP PT# EL-LMP-00-0345



**3:1 AIR & ELECTRICAL CABLE HOSE SET  
15 FT. (TRACTOR TO TRAILER)**

**ABS**

USTP PT# EL-HRN-00-0060



**ELECTRICAL HARNESS - 7 WAY  
6 x 14 GAUGE / 1 x 12 GAUGE**

**15FT (TRACTOR TO TRAILER)**

**NON-ABS**

USTP PT# EL-HRN-00-0065



**TAG LIGHT**

USTP PT# EL-LMP-00-0350



**TERMINAL RING  
16-14GA .375 STUD - 25PCS  
(1-52154)**

USTP PT# EL-WIR-00-0370



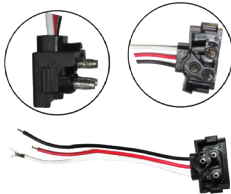
**BULBS - #1157**

USTP PT# EL-BLB-00-0155



**PIGTAIL, 3-PRONG  
4" STOP/TURN LIGHT  
- INCANDESCENT**

USTP PT# EL-LMP-00-0310



**PIGTAIL, 2-PRONG FOR  
MARKER LIGHT  
- INCANDESCENT**

USTP PT# EL-LMP-00-0330



**GROMMET -  
2" MARKER BACK, OPEN**

USTP PT# EL-LMP-00-0325



**TAIL LIGHT  
RUBBER GROMMET - 4"**

USTP PT# EL-LMP-00-0305



**MARKER LIGHT - 2" ROUND  
SEALED**

**AMBER**

USTP PT# EL-LMP-00-0320

**RED**

USTP PT# EL-LMP-00-0315



**ROUND SEALED 4" RED  
TAIL LIGHT - GENERIC**

USTP PT# EL-LMP-00-0300





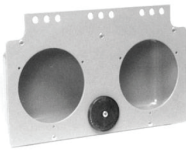
**CONSPICUITY TAPE - 2" x 150"**  
**11"RED / 7"WHITE**  
 USTP PT# SR-RFT-00-0040



**DOCUMENT HOLDER**  
**ROUND, POLY**  
 USTP PT# SR-DOC-00-0060



**BOX MODULE -**  
**DUAL 4" TAIL LIGHT**  
 USTP PT# EL-LMP-00-0365



**MOUNTING BRACKET -**  
**TWO 4" LAMPS**  
 USTP PT# EL-LMP-00-0370



**ANNUAL VEHICLE INSPECTION REPORT**  
**2-PLY W/ CARBON NO DECAL 10/PK**  
 USTP PT# SR-DOC-00-0055

**DECAL KIT ANNUAL INSPECTION**  
**INCL: INSPECTION DECAL CLEAR COVER**  
 USTP PT# SR-DOC-00-0050

**ELECTRICAL**

**IMPORT LANDING GEAR (pair)**

USTP PT# LG-LGL-00-0090

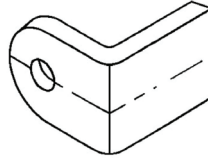


**UNIVERSAL LUG BRACE:**

**3/8" MTG LUG**

**90° ANGLE - 2" WIDE**

USTP PT# LG-LGA-00-0245



**JUST AMERICAN EAGLE  
50K, LANDING GEAR (pair)**

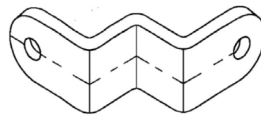
USTP PT# LG-LGL-00-0095



**BRACE EAR 3/8"**

**Universal - Style 02-24A**

USTP PT# LG-LGA-00-0250



LANDING GEAR

**ADJUSTABLE LEG BRACE:**

**26"-41"**

USTP PT# LG-LGA-00-0255

**42"-57"**

USTP PT# LG-LGA-00-0260

**58"-72"**

USTP PT# LG-LGA-00-0265



**CROSS SHAFT 68.0" HD**

**HOLE ONE END 69"**

USTP PT# LG-LGA-00-0280



**LANDING GEAR BOLT KIT**

**5/8" - 18x1.5"**

**Grd5 Hex bolt/lock nut, 10 pc**

USTP PT# LG-LGA-00-0240



**SAND SHOE AXLE W/ 1/2" SCREW  
(CLIP ONLY)**

USTP PT# LG-LGA-00-0285



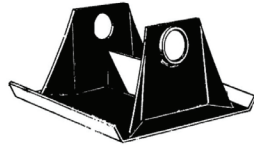
**SAND SHOE AXLE (W/ CLIP)**

USTP PT# LG-LGA-00-0305



**SAND SHOE SINGLE GUSSET 10"X10" - 3/16" SIDES-BASE  
(05-300)**

USTP PT# LG-LGA-00-0290



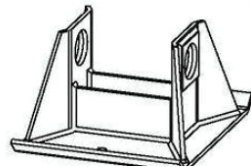
**SAND SHOE - LOW PROFLE 7GA W/PATCH  
10"X10" - NO GUSSET (05-310)**

USTP PT# LG-LGA-00-0295



**SAND SHOE DOUBLE GUSSET HEAVY DUTY  
10X10**

USTP PT# LG-LGA-00-0300



**KING PIN LOCK**

USTP PT# FW-JWK-00-0075



**GLAD HAND LOCK**  
USTP PT# FW-JWK-00-0080



**5TH WHEEL PLATE:**  
**20' CH (36"x 56"x 3/8")**  
USTP PT# FW-JWK-00-0090  
**40' CH (36"x 67.5"x 3/8")**  
USTP PT# FW-JWK-00-0085



**KING PIN DOUBLE SPOOL -**  
**1/4" & 5/16" BTM PLATE (pin only)**  
USTP PT# FW-JWK-00-0095

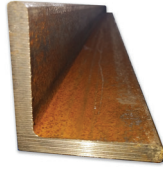


**DOCK BUMPER 2-7/8 x 3-1/4 x 6**  
USTP PT# CH-ICL-00-0060

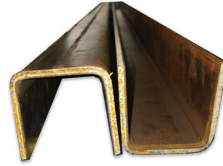




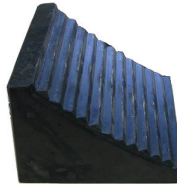
**STEEL ANGLE**  
**(3" x 3" x 10' x 3/8")**  
USTP PT# FW-JWK-00-0105



**STEEL CHANNEL**  
**(3" x 3" x 8' x 1/4")**  
USTP PN# FW-JWK-00-0100



**WHEEL CHOCK**  
**(8" D X 10" L X 6" H)**  
USTP PN#SR-MFL-05-0005



**FABRICATED ROCKER EQUALIZER- 1 HOLE  
HUTCH 9700 UNDERMOUNT  
(16158-01)**

USTP PT# SW-SUH-00-0990



**EQUALIZER 2-HOLE  
FOR H7700/7600  
(750-03)**

USTP PT# SW-SUH-00-0995



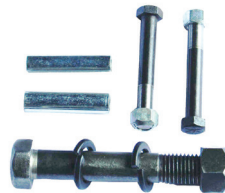
**HUTCH 9700 UNDERMOUNT  
FABRICATED ROCKER HANGER  
(16319-02)**

USTP PT# SW-SUH-00-1000



**HUCK LOCK EQUALIZER BOLT KIT  
(16353-01)**

USTP PT# SW-SUH-00-1005



**HUTCH EQUALIZER RUBBER BUSHING  
(16146-01)**

USTP PT# SW-SUH-00-1010



**HUTCH 9700 UNDERMOUNT FABRICATED STYLE  
SUSPENSION HANGER  
FRONT. (7701-02)**

USTP PT# SW-SUH-00-1015



**HUTCH 9600/7700 UNDERMOUNT  
FABRICATED HANGER  
REAR. (7703-02)**

USTP PT# SW-SUH-00-1020



**HUCKED SUSPENSION  
BOLT REBOUND KIT  
4EA. (10287-10)**

USTP PT# SW-SUH-00-1025



**HUTCH 9700 5" ROUND AXLE  
BOTTOM PLATE  
(710-00/E2909)**

USTP PT# SW-SUH-00-1030



**5" ROUND AXLE  
3/4" SPRING SEAT  
(705-01)**

USTP PT# SW-SUH-00-1030



SUSPENSION

**ADJUSTABLE RADIUS ROD FOR H9700 49"AC**

**18.50" TO 21.00" (713-05)**

USTP PT# LG-LGA-00-0255

**20.25" TO 22.75" (713-07)**

USTP PT# LG-LGA-00-0260



**SUSPENSION TORQUE ARM NON-ADJUSTABLE  
FIXED 19.25" (715-00)**

USTP PT# SW-TRQ-00-0160



**RADIUS ROD BOLT KIT 1-14X5 W/ FLANGE LOCK NUT  
(719-02)**

USTP PT# SW-TRQ-00-0165



**RADIUS ROD BUSHING 1"IDX3"L  
(321-175)**

USTP PT# SW-TRQ-00-0170



**TORQUE ARM BUSHING KIT - 2PCS  
(E3079)**

USTP PT# SW-TRQ-00-0175



**3 LEAF SUSPENSION SPRING MEDIUM ARCH  
354-00 (OTHER SIZES AVAIL)**

USTP PT# SW-SUH-00-1045



**U BOLT - 3.5" THREAD (GRADE 5)**

**7/8"x5"Wx12.25"**

USTP PT# LG-LGA-00-0255

**7/8"x3"Wx12.25"**

USTP PT# LG-LGA-00-0260







## TWIST LOCKS - GENERIC SAMPLES

When ordering TWIST LOCKS, we need some basic information to better serve you, and find the right parts - quickly. Please use the guide on the following page in reference to these basic measurements.

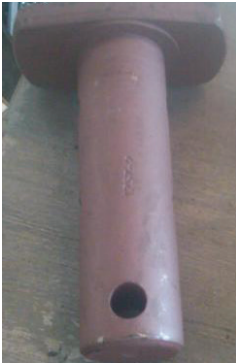
**TWIST LOCK HANDLE (1107-1257)**



**TWIST LOCK HANDLE (1108-1350)**



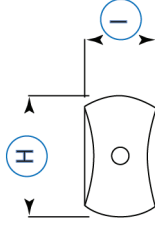
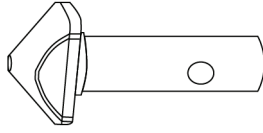
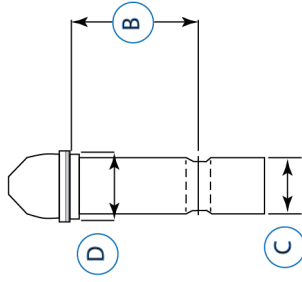
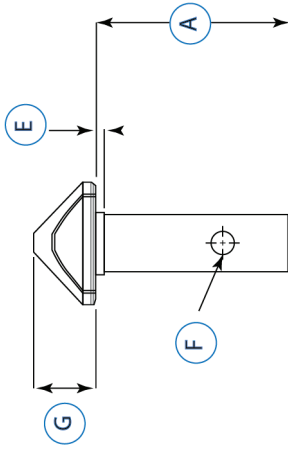
**SINGLE TWIST LOCK**



**TWIST LOCK -  
READY TO WELD**



# GENERIC TWISTLOCK MEASUREMENT GUIDE



## KEY

- (A) HEIGHT - BASE TO BOTTOM OF CAP
- (B) HEIGHT FROM PIN HOLE (CENTER) TO BASE OF CAP
- (C) BASE DIAMETER
- (D) EXPANSION JOINT (?) DIAMETER
- (E) EXPANSION JOINT HEIGHT
- (F) PIN HOLE DIAMETER
- (G) CAP HEIGHT
- (H) CAP LENGTH
- (I) CAP WIDTH

# **YELLOWDECK**

Cargo Equipment and Export Specialist

**We offer International Shipping to  
anywhere in the world!**

**We offer Air Freight and Ocean Shipping.**

**We can deliver or Ship to  
any freight forwarder.**

SHIPPING



## **WE SELL:**

- **Parts for trucks,  
trailers, and forklifts.**
- **Tires.**
- **Trucking equipment.**

# **YELLOWDECK**

Cargo Equipment and Export Specialist

4402 NW 74 Ave  
Miami, FL 33166

9am-4pm Monday-Friday  
Tel. 305.731.2324





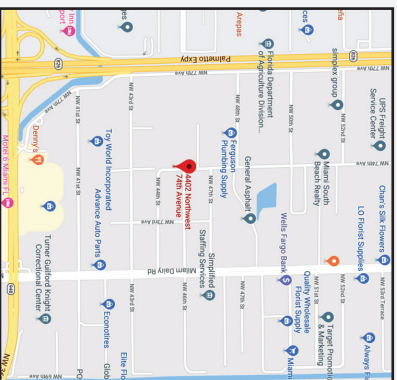
# **YELLOWDECK**

Cargo Equipment and Export Specialist

**4402 NW 74 Ave  
Miami, FL 33166**

**Tel: 305.731.2324**

**Hours:  
M-F 9am-4pm**



# SEE WHAT THE NEW YEAR HAS TO OFFER!